

Lapalma Finishes Specification



CONTENTS:

Fabric	
CAT A	2.
CAT B	10.
CAT C	18.
CAT D	31.
CAT E	39.

Soft Leather	
Pelle	41.
Cuoio	42.

CAT A - Jet FIDIVI

Application

Contract and domestic use.

Description

Composition:
100% Polyester - Trevira CS®
Width: 140 cm
Weight: 260 g/m2

Tests

Abrasion
UNI EN ISO 12947-2 65000 ± 10% rubs

Pilling
UNI EN ISO 12945-2 5 (Standard picture)
Tolerance: from 4 to 5

Colour fastness
to rubbing UNI EN ISO 105-X12
(4/5 grey scale)
Tolerance: from 4 to 5
to light UNI EN ISO 105-B02 6 (Blue scale)
Tolerance: from 5 to 8

Flame resistance

C1
B1
M1
CRIB 5
EN 1021/1-2
IMO Res. A 652 (16) Part 8
IMO Res. A 471 (XII) Part 7
NF D 60013 Class AM 18

Care

Dry clean or clean with foam detergents.

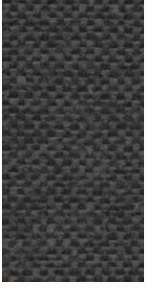
Samples are purely indicative because of natural inconsistencies that occur in the raw materials. As a result there may be small differences in the product delivered.



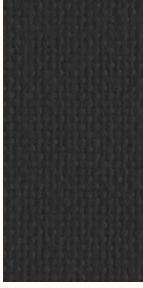
CAT A - Jet FIDIVI



CAT A - Jet FIDIVI



9806



8033

CAT A - Maya FIDIVI

Application

Contract and domestic use.

Description

Composition:
100% Polyester - Trevira CS®

Width: 140 cm

Weight: 420 g/m2

Tests

Abrasion
UNI EN ISO 12947-2 100000 ± 10% rubs

Pilling
UNI EN ISO 12945-2 5 (Standard picture)
Tolerance: from 4 to 5

Colour fastness
to rubbing UNI EN ISO 105-X12
(4/5 grey scale)
Tolerance: from 4 to 5
to light UNI EN ISO 105-B02 6 (Blue scale)
Tolerance: from 5 to 8

Flame resistance

C1
B1
M1
CRIB 5
EN 1021/1-2
IMO Res. A 652 (16) Part 8
IMO Res. A 471 (XII) Part 7
BS 7176 Medium Hazard
NF D 60013 Class AM 18

Care

Dry clean or clean with foam detergents.

Samples are purely indicative because of natural inconsistencies that occur in the raw materials. As a result there may be small differences in the product delivered.



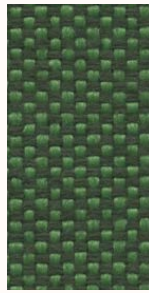
CAT A - Maya FIDIVI



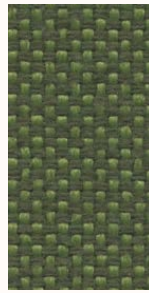
9805



7020



9704



9703



9702



7009



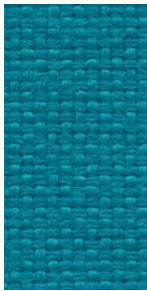
9705



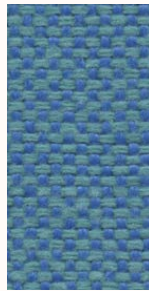
9602



6014



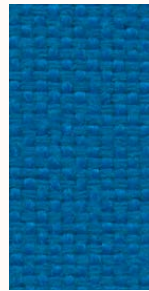
6091



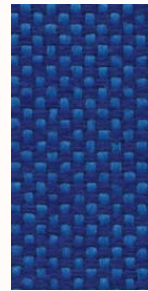
9601



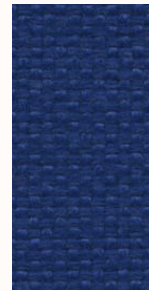
6006



6075



9603



6080



9604



9501



9503



9502

CAT A - Medley GABRIEL

Design

Mette Krebs Petersen

Application

Offices, hotels, institutions, domestic use.

Description

Composition:
100% Polyester

Width: 140 cm

Weight: app. 510 g/lin.m

Tests

Abrasion
App. 75.000 Martindale rubs
EN ISO 12947-2

Pilling
Note 4, EN ISO 12945-2

Light fastness
Note 5-7, ISO 105-B02

Flame resistance
BS EN 1021 1&2
BS 5852 Part 1 0,1 Cigarette & match
California Bulletin CAL 117-E-Class 1
Class Uno UNI 9175 Class 1 I EMME
CA TB 117-2013
ÖNORM B 3825-B2-3800-Q1 UK

Care

Dry clean or clean with foam detergents.

Samples are purely indicative because of natural inconsistencies that occur in the raw materials. As a result there may be small differences in the product delivered.



CAT A - Medley GABRIEL



66145



65086



65012



65011



64124



64125



64123



64019



63013



63017



63016



63063



63064

CAT A - Grimm Fr MP

Application

Contract and domestic use

Description

Composition
31% CO - 68% PVC- 1% PU

Weight g/m2 640

Width cm 140

Tests

Abrasion
resistance cicli / cycles EN ISO 5470-2
150000

Colour fastness to light (Xenotest)
UNI EN ISO 105-B02 7 colour change

Dry rubbing
ISO 105 X-12 4/5

Wet rubbing
ISO 105 X-12 4/5

Acid perspiration
ISO 105 E-04 4/5

Alcaline perspiration
ISO 105 E-04 4/5

Bending strenght cycles
UNI 4818-13 150000

Tensile strenght
ISO1421, Met.1 550 N warp, 300N weft

Tear strenght
ISO 4674-1 40 N warp, 45N weft

Flame resistance
EN 1021-1 EN 1021-2
NF D 60-013
UNI 9175 CL. 1IM
BS 5852 crib 5

Care

Clean with a damp cloth
and mild soap.

Samples are purely indicative because of natural inconsistencies that occur in the raw materials. As a result there may be small differences in the product delivered.



CAT A - Grimm Fr MP



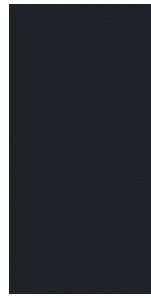
7FC



7FQ



7EM



2DJ



8P8



8HV



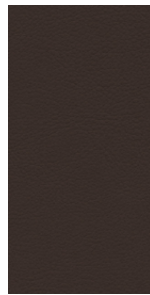
8H4



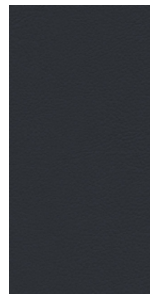
8P9



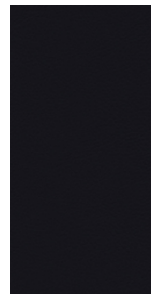
2PB



2C7



2PA



901

CAT B - Capture GABRIEL

Application

Contract and domestic use.

Description

Composition:

85% new Zealand wool, 15% polyamide

Width: 140 cm

Weight: app. 475 g/lin.m

Tests

Abrasion
App. 200.000 Martindale rubs
EN ISO 12947

Pilling
Note 4-5, EN ISO 12945

Light fastness
Note 5-7, ISO 105-B02

Flame resistance
EN 1021 1/2
BS 5852 Part 1
BS 5852, part 5 (with treatment)
DIN 4102 B2
UNI 9175/UNI 9176, 1 I-M
US Cal. Tech. Bull. 117.2013

Care

Dry clean or clean with foam detergents.

Samples are purely indicative because of natural inconsistencies that occur in the raw materials. As a result there may be small differences in the product delivered.

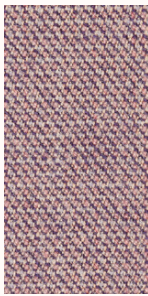


CAT B - Capture GABRIEL

Cat B - Capture GABRIEL



6901



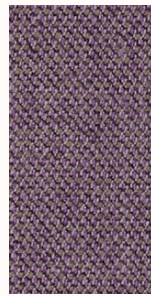
4801



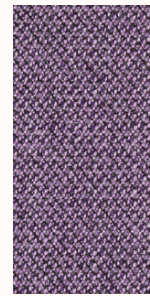
6701



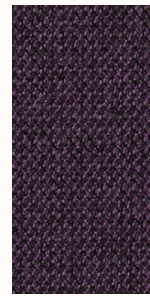
6302



6202



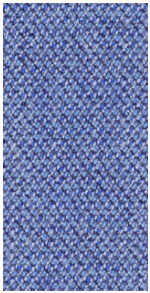
4501



7001



5201



4901



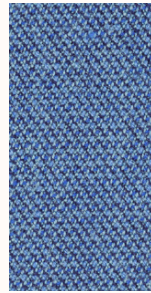
4902



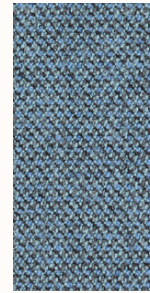
6602



6001



5002



5001



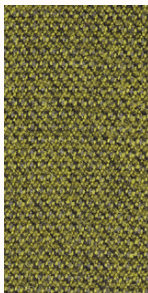
6601



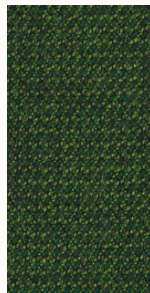
7101



5101



5301



6501

CAT B - Crisp GABRIEL

Application

Contract and domestic use.

Description

Composition:

93% new Zealand wool, 7% polyamide

Width: 140 cm

Weight: app. 460 g/lin.m

Tests

Abrasion
App. 200.000 Martindale rubs
EN ISO 12947-2

Pilling
Note 4-5, EN ISO 12945-2

Light fastness
Note 5-7, ISO 105-B02

Flame resistance
EN 1021 1/2
BS 5852 Part 1 0,1
UNI 9175 1 I-M
US Cal. Tech. Bull. 117.2013
IMO MSC 307(88)

Care

Dry clean or clean with foam
detergents.

Samples are purely indicative because of natural inconsistencies that occur in the raw materials. As a result there may be small differences in the product delivered.



CAT B - Crisp GABRIEL



4601



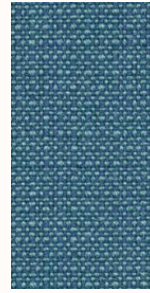
4122



4741



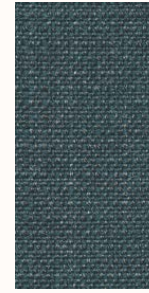
4751



4602



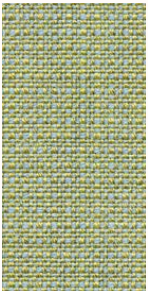
4603



4723



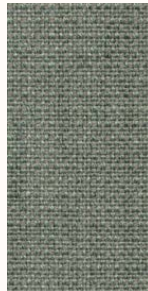
4731



4201



4605



4752



4761



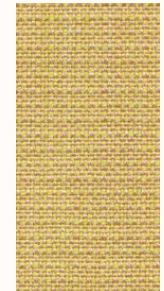
4117



4203



4211



4771

CAT B - Grain GABRIEL

Application

Offices, hotels, institutions, domestic use.

Tests

Abrasion
App. 100,000 Martindale rubs EN ISO 12947-2

Pilling
Note 5, EN ISO 12945-2

Light fastness
Note 5-7, ISO 105-B02

Flame resistance
BS EN 1021 1&2 Cigarette and Match
BS EN 1021-1 Cigarette
CA TB 117-2013

Care

Dry clean or clean with foam detergents.

Samples are purely indicative because of natural inconsistencies that occur in the raw materials. As a result there may be small differences in the product delivered.



60300 60301 60302 60303 60320 60321 60322 60323
 60324 60325 60328 60999 61037 61146 61229 61230
 61247 61248 61249 61250 61251 61252 61253 61254

CAT B - Grain GABRIEL



61255



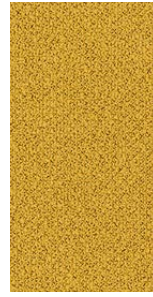
61256



62016



62121



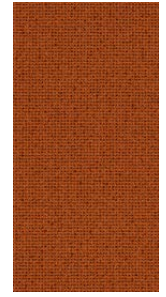
62122



62123



63117



63118



64041



64249



64250



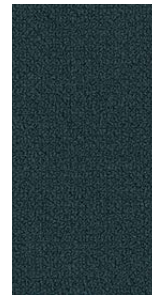
64251



66216



66231



66232



66233



66234



66235



66236



66237



68155



68243



68257



68258



68259



68260



Suitable for outdoor

CAT B - Nattè SUNBRELLA

Application

Contract and domestic use.

Description

Composition:
100% Sunbrella® Acrylic

Width: 140 cm

Weight: app. 385 g/lin.m

Tests

Water-Repellent
Spray test ISO 4920 class 5
Colour fastness
UV indoor ISO105B02 class 8
Weather outdoor ISO105B04 1000H
Class 4-5
Dry friction ISO105X12 Class 5

Care

Dry clean or clean with foam
detergents.

Samples are purely indicative because of natural inconsistencies that occur in the raw materials. As a result there may be small differences in the product delivered.



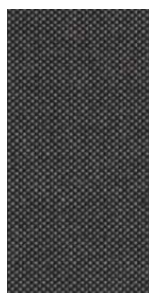


Suitable for outdoor

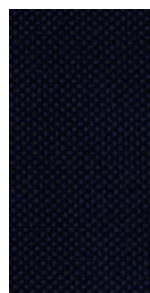
CAT B - Nattè SUNBRELLA



5073 140
Cadey Grey



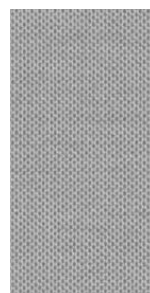
5075 140
Charcoal



5076 140
Marine



5077 140
Antique



5078 140
Stone



P048
Clay



Suitable for outdoor

CAT B - Iris RADA

Application

Contract and domestic use.

Description

Composition:
100% PET RECYCLED
(made with recycled plastic bottles)
Width: 140 cm
Weight: app. 800 g/lin.m

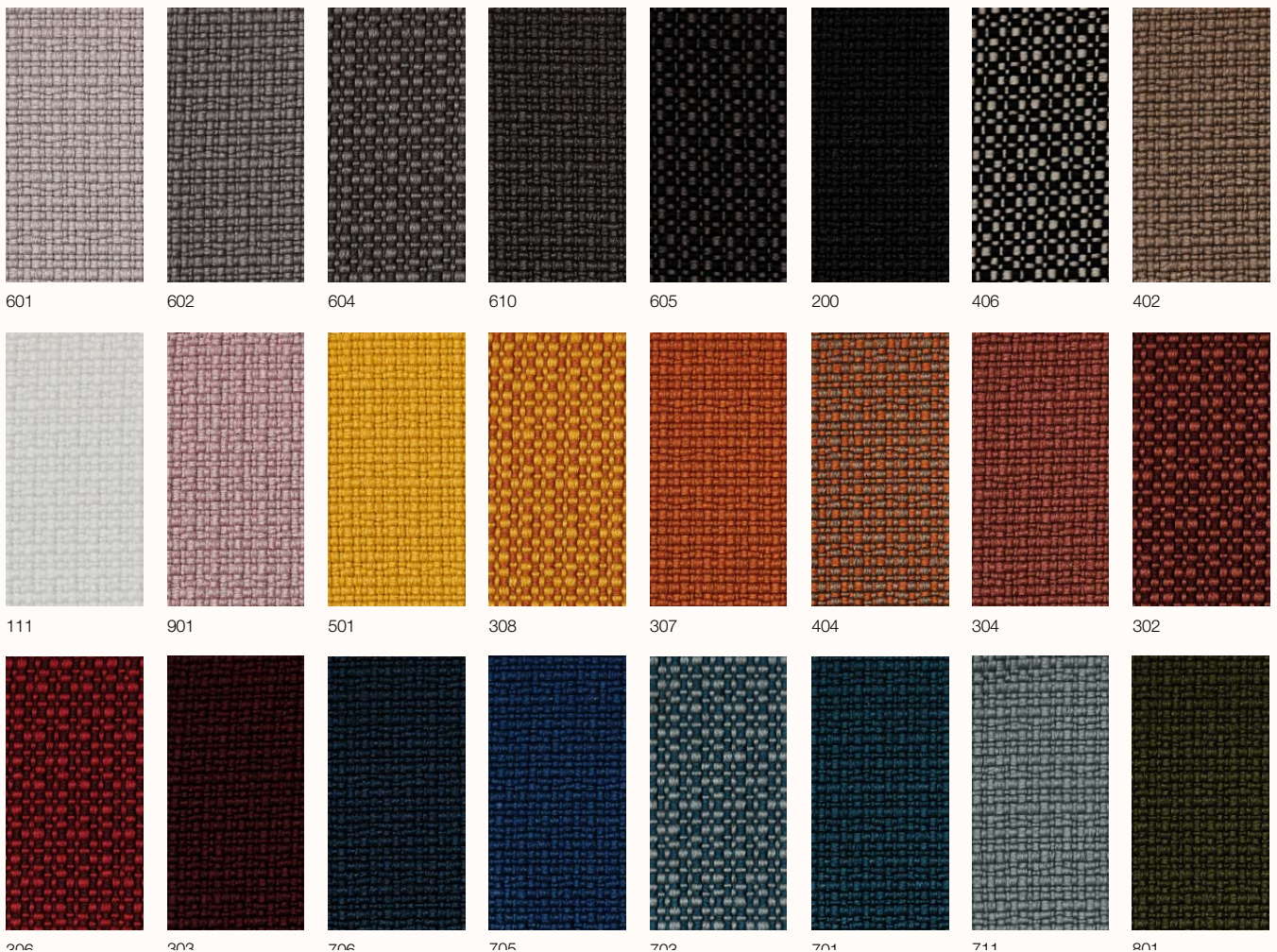
Tests

Abrasion
App. 100.000 Martindale rubs
EN ISO 12947
Pilling
dry 4-5, EN ISO 12945
wet 4, EN ISO 12945
Light fastness 7, ISO 105-B02
Flame resistance
EN 1021-1/2
BS 5852, flame
BS 5852, cigarette test
IMO FTP-8 Res.A652
UNI 9175, class 1 I-M
US Cal. Tech. Bull. 117.2013
Flame retardants
According to GB/T 24279-1:2018

Care

Dry clean or clean with foam detergents.

Samples are purely indicative because of natural inconsistencies that occur in the raw materials. As a result there may be small differences in the product delivered.





Suitable for outdoor

CAT B - Fortezza 68 PRIMAFABRICS

Application

Indoor / Outdoor: Contract and domestic use.

Tests

Martindale: >50,000 rubs
 Lightfastness: UNI EN ISO 105-B02
 UNI EN ISO 105-B04
 CLASS 4 (AATCC 16) 1.200 ore
 FR: UNI 8456 - 9174 - CLASS 1 - ITALIAN
 FIRE SAFETY PASS
 BS EN 1021.1 : 1994 - SOURCE 0 -
 CIGARETTE TEST PASS
 BS EN 1021.2 : 1994 - SOURCE 1 -
 BUTANE FLAME PASS ON FR FOAM
 C.T.B. 117 SECTION AND PART 1 -
 MARCH 2000 - CLASS 1
 B1 ACCORDING TO DIN 4102, PART 1
 (MAY 1998)
 NFPA 260:2013
 IMO 2010 FTP CODE PART 8: PASS
 EN 13773 (2004) CLASSE 1

Care

Washability: 40°C in water

Samples are purely indicative because of natural inconsistencies that occur in the raw materials. As a result there may be small differences in the product delivered.





Suitable for outdoor

CAT B - Fortezza 68 PRIMAFABRICS



68 30 2



68 39 1



68 41 1



68 42 1



68 43 1



68 46 1



68 76 1



68 79 1



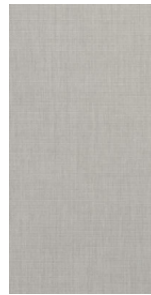
68 84 2



68 87 2



68 89 1



68 96 1



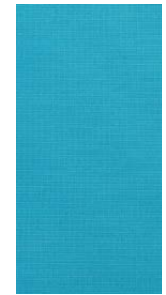
68 102 1



68 103 1



68 104 1



68 105 1



68 106 1



68 107 1



68 108 1

CAT B - Valencia SPRADLING

Application

Contract and domestic use.

Description

Composition:
front PVC

back polyester cotton

Width: 137 cm

Weight: app. 890 g/lin.m

Tests

Abrasion
App. 300.000 Martindale rubs
EN ISO 12947 part 2

UV Xenotest DIN54004 blue wool scale

Antibacterial Protection

Flame resistance
EN 1021-part 1/2
BS 5852, part 2
BS 5852 crib 5
FMVSS 302
FAR 25/853

Care

Dry clean or clean with foam
detergents.

Samples are purely indicative because of natural inconsistencies that occur in the raw materials. As a result there may be small differences in the product delivered.



CAT B - Valencia SPRADLING

							
7001 Amethyst	3068 Marine	2108 Night	3067 Delft	3001 Lavendel	3069 Baltic	5057 Türkis	2106 Coral
							
5056 Jade	2119 Teal	4043 Platin	5065 Petrol	4042 Titan	2107 Skylight	4040 Auster	4045 Perle
							
4044 Warm Grey	2116 Camel	2117 Cashmere	0035 Terracotta	2115 Chestnut	0033 Buche	9035 Schwarz	4003 Graphite
							
2109 Citrus	2110 Avocado	5041 Apfel	5001 Olive	5069 Grün	4052 Lichtgrau	4002 Laurel	4020 Silver
							
6020 Gold	1020 Ivory	8020 Pearlescence	6003 Nectarine	9001 Sumatra	4001 Mushroom	0002 Cognac	1001 Champagne

CAT B - Valencia SPRADLING



5002
Moss



2001
Merlot

CAT C - Canvas 2 KVADRAT

Design

Giulio Ridolfo

Application

Offices, hotels, institutions, domestic use.

Description

Composition:

90% new wool, 10% nylon

Yarn type: Worsted

Binding: Semi-plain weave

Width: 140 cm

Weight: app. 480 g/lin.m

Samples are purely indicative because of natural inconsistencies that occur in the raw materials. As a result there may be small differences in the product delivered.

Tests

Abrasion

App. 100.000 Martindale rubs
EN ISO 12947

Pilling

Note 4-5, EN ISO 12945

Light fastness

Note 5-7, ISO 105-B02

Flame resistance

EN 1021-1/2

BS 5852 part 1

BS 5852, ignition source 2-3

DIN 4102 B2

Önorm B1/Q1

NF D 60 013

UNI 9175, 1IM

US Cal. Tech. Bull. 117

IMO A.652(16)

Care

Dry clean or clean with foam detergents.



114



224



244



264



174



154



134



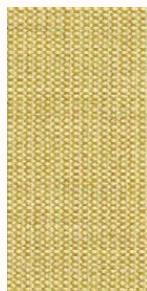
124



216



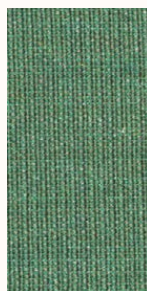
414



446



926



946



954



964



424



716



836



726



746



666



734



786



794

CAT C - Canvas 2 KVADRAT



684



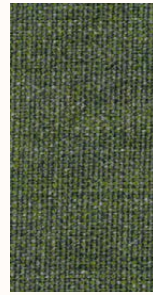
764



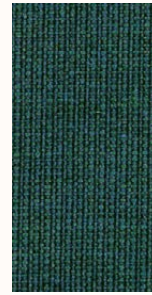
854



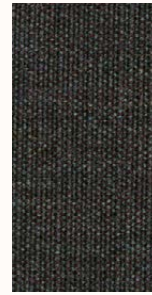
996



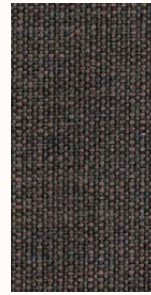
974



984



364



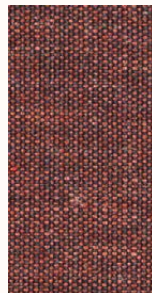
674



694



654



576



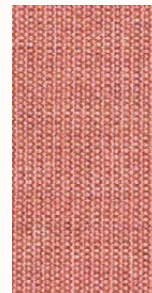
644



356



614



566



546



556



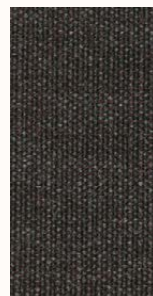
454



254



936



374

CAT C - Clara 2 KVADRAT

Design

Anne Birgitte Hansen

Application

Offices, hotels, institutions, domestic use.

Description

Composition:
92% new wool worsted, 8% nylon
Yarn type: Staple, worsted
Binding: Semi-plain weave
Width: 138 cm
Weight: app. 400 g/lin.m

Tests

Abrasion
App. 80.000 Martindale rubs,
EN ISO 12947
Pilling
Note 4, EN ISO 12945
Light fastness
Note 5-7, ISO 105-B02
Flame resistance
EN 1021-1/2
BS 5852, ignition source 2-3
DIN 4102 B2
NF D 60 013
UNI 9175 11M
US Cal. Tech. Bull. 117, Sec. E
NFPA 260
IMO A.652(16)

Care

Vacuuming and dry cleaning.

Samples are purely indicative because of natural inconsistencies that occur in the raw materials. As a result there may be small differences in the product delivered.



CAT C - Fiord 2 KVADRAT

Design

Louise Sigvardt & Tone Barnung

Application

Offices, hotels, institutions, domestic use.

Description

Composition: 92% new wool, 8% nylon
 Yarn type: Worsted
 Binding: Dobby
 Width: App. 140 cm (app. 55 inches)
 Weight: App. 500 g/lin.m

Samples are purely indicative because of natural inconsistencies that occur in the raw materials. As a result there may be small differences in the product delivered.

Tests

Abrasion
 App. 60.000 Martindale rubs
 EN ISO 12947

Pilling
 Note 4-5, EN ISO 12945

Light fastness
 Note 5-7, ISO 105-B02

Flame resistance
 EN 1021-1/2
 BS 5852 part 1
 DIN 4102 B2
 NF D 60 013
 UNI 9175 1IM
 US Cal. Bull. 117-2013
 IMO FTP Code 2010:Part 8
 With flame retardant treatment:
 BS 5852 Crib 5

Care

Vacuuming and dry cleaning



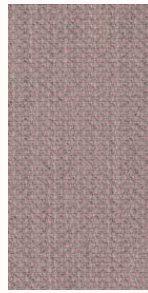
CAT C - Fiord 2 KVADRAT



662



642



521



551



581



571



562



672



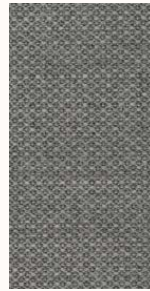
201



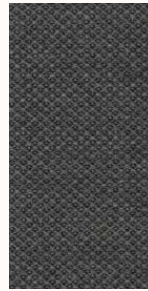
101



251



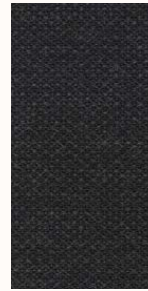
151



171



121



191

CAT C - Hallingdal 65 KVADRAT

Design

Nanna Ditzel

Application

Offices, hotels,
institutions, domestic use.
Great durability

Description

Composition:
70% new wool, 30% viscose

Yarn type: Stapel

Binding: Plain

Width: 130 cm

Weight: app. 795 g/lin.m

Samples are purely indicative because of natural inconsistencies that occur in the raw materials. As a result there may be small differences in the product delivered.

Tests

Abrasion
App. 100.000 Martindale rubs
EN ISO 12947

Pilling
Note 3, EN ISO 12945

Light fastness
Note 5-7, ISO 105-B02

Flame resistance
EN 1021-1/2
BS 5852, ignition source 2-5
DIN 4102 B2
Onorm B1/Q1
UNI 9175/UNI 9176, 1IM
US Cal. Tech. Bull. 117
IMO A.652(16)

Care

Dry clean or clean with foam
detergents.



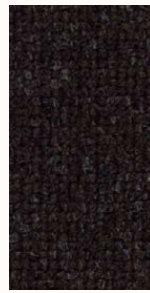
CAT C - Hallingdal 65 KVADRAT



370



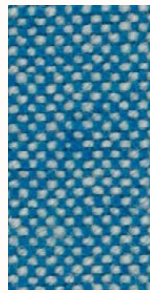
368



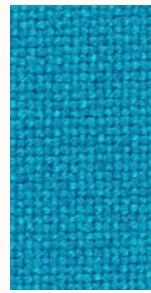
376



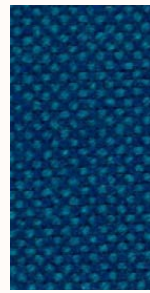
390



840



850



810



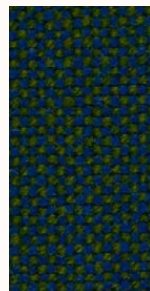
723



733



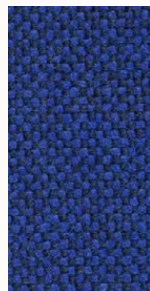
750



890



753



754



773



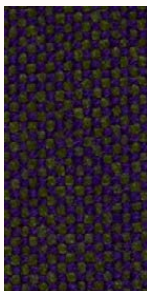
764



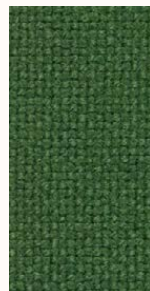
763



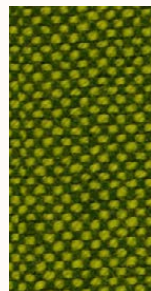
702



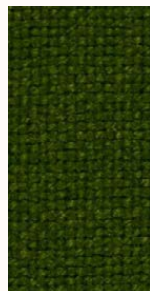
968



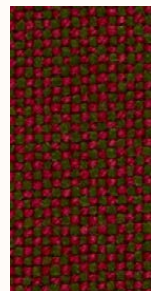
944



980



960



660



563



573



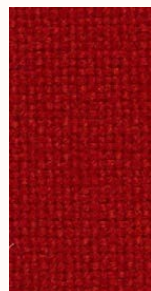
694



687



657



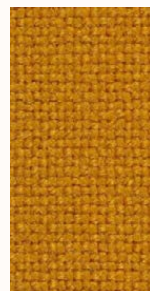
674



680



526



547



590



600



596

CAT C - Remix 3 KVADRAT

Design

Giulio Ridolfo

Application

Offices, hotels, institutions, domestic use. Great durability

Description

Composition: 90% new wool, 10% nylon
 Yarn type: Stapel, worsted
 Binding: Plain weave
 Width: 140 cm
 Weight: app. 460 g/lin.m

Samples are purely indicative because of natural inconsistencies that occur in the raw materials. As a result there may be small differences in the product delivered.

Tests

Abrasion
 App. 100.000 Martindale rubs, EN ISO 12947

Pilling
 Note 3-4, EN ISO 12945

Light fastness
 Note 5-7, ISO 105-B02

Flame resistance
 EN 1021-1/2
 BS 5852, ignition source 2-3
 Onorm B1/Q1
 UNI 9175, 1IM
 Cal. Tech. Bull. 117, Sec. E
 IMO A.652(16)

Care

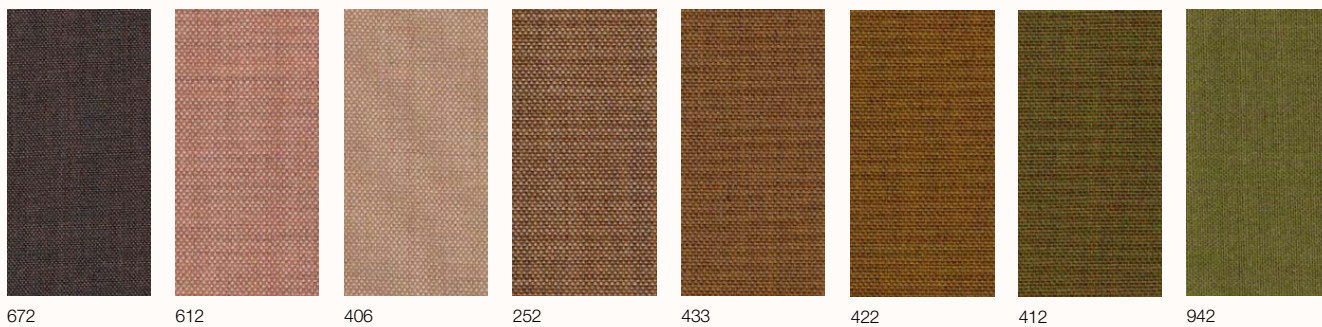
Dry clean or clean with foam detergents.



CAT C - Remix 3 KVADRAT



CAT C - Remix 3 KVADRAT



672

612

406

252

433

422

412

942

CAT C - Tonica 2 KVADRAT

Design

Georgina Wright

Application

Offices, hotels, institutions, domestic use.

Description

Composition:
100% new wool

Yarn type: Stapel

Binding: Plain

Width: 140 cm

Weight: app. 700 g/lin.m

Tests

Abrasion
App. 45.000 Martindale rubs,
EN ISO 12947

Pilling
Note 4-5, EN ISO 12945

Light fastness
Note 5-7, ISO 105-B02

Flame resistance
EN 1021-1/2
BS 5852, ignition source 2-4
DIN 4102 B2
Önorm B1/Q1
UNI 9175/UNI 9176, 1IM
Cal. Tech. Bull. 117, Sec. E
IMO A.652(16)

Care

Vacuuming and dry cleaning

Samples are purely indicative because of natural inconsistencies that occur in the raw materials. As a result there may be small differences in the product delivered.



CAT C - Tonica 2 KVADRAT



831



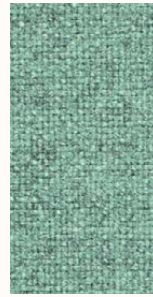
832



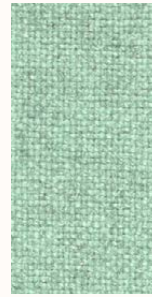
873



962



933



923



613



523



533



511



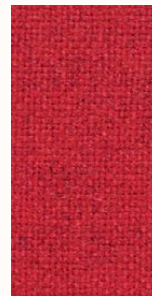
543



531



611



643



612



Suitable for outdoor

CAT C - Lapalma Smart

Application

Contract and domestic use

Description

Composition:
100% SOLUTION DYED ACRILIC
Width: 140cm
Weight Gr./mtl.: 700

Tests

Shrinkage after dry cleaning
Warp: -1 % Weft: -1 %

Shrinkage after washing
Warp: -3 % Weft: -3 %

Resistance to PILLING
after 2000 cycles
Note 4 EN ISO 12945-2

Abrasion
20000 Cidli EN ISO 12947-2

Light fastness
Note 7/8 EN ISO105B02

Color fastness to washing
Note 5 EN ISO105C06

Color fastness to dry Cleaning
Note 5 EN ISO105D01

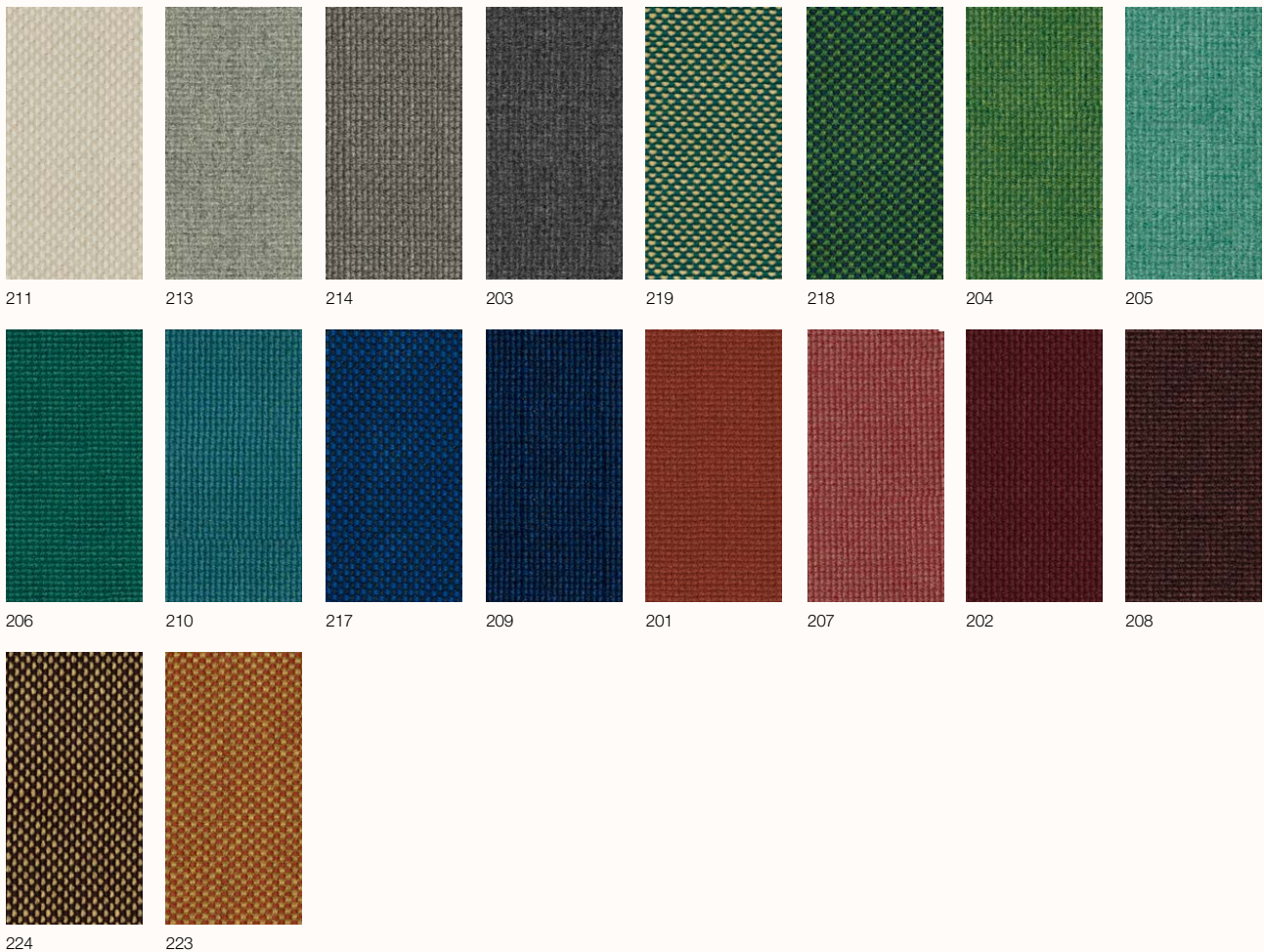
Color fastness
to crocking Test WET
Note 4/5 EN ISO105X12

Color fastness
to crocking Test DRY
Note 5 EN ISO105X12

Care

Cleaning: Vacuuming
Mount in moist condition.
Mildew growth is not promoted
by the textile but mildew may
grow on dirt and other foreign
substances if not removed.
Keep the textile dry to avoid
mildew spores to stick.

Samples are purely indicative because of natural inconsistencies that occur in the raw materials. As a result there may be small differences in the product delivered.



Cat C – Re-wool KVADRAT

Application

Offices, hotels, institutions, domestic use. Great durability.

Tests

Abrasion
 App. 100.000 Martindale rubs
 EN ISO 12947
 Pilling
 Note 4, EN ISO 12945
 Light fastness
 Note 5-7, ISO 105-B02
 Flame resistance
 AS/NZS 1530.3
 AS/NZS 3837 class 2
 BS 5852 crib 5 with treatment *
 BS 5852 ignition source 3
 BS 5852 part 1
 EN 1021-1/2
 EN 13501 B-s2, d0 wrapped, with treatment *
 IMO FTP Code 2010 Part 8
 NF D 60 013
 ÖNORM B1/Q1
 SN 198 898 5.3 with treatment *

Care

Dry clean or clean with foam detergents.

Samples are purely indicative because of natural inconsistencies that occur in the raw materials. As a result there may be small differences in the product delivered.



CAT D – Divina MD KVADRAT

Design

Finn Skodt

Application

Offices, hotels, institutions, domestic use.

Description

Composition:

100% new wool

Yarn type: Stapel

Binding: 4-end broken twill

Width: 150 cm

Weight: app. 820 g/lin.m

Tests

Abrasion

App. 45.000 Martindale rubs,
EN ISO 12947

Pilling

Note 3, EN ISO 12945

Light fastness

Note 5-7, ISO 105-B02

Flame resistance

EN 1021-1/2

BS 5852, ignition source 2-5

DIN 4102 B2

Onorm B1/Q1

NF D 60 013

UNI 9175 1IM

US Cal. Tech. Bull. 117

AS.NZS 1530.3

IMO A.652(16)

Care

Dry clean or clean with foam detergents.

Samples are purely indicative because of natural inconsistencies that occur in the raw materials. As a result there may be small differences in the product delivered.



193

353

343

363

453

213

413

203

913

943

973

873

843

813

293

783

713

733

743

753

773

683

673

653

CAT D - Divina MD KVADRAT



633



613



433

CAT D - Divina Melange 3 KVADRAT

Design

Finn Sködt

Application

Offices, hotels, institutions, domestic use.

Description

Composition:

100% New wool

Yarn type: Stapel

Binding: 4-end broken twill

Width: 150 cm

Weight: app. 820 g/lin.m

Tests

Abrasion

App. 45.000 Martindale rubs
EN ISO 12947

Pilling

Note 3, EN ISO 12945

Light fastness

Note 7, ISO 105-B02

Flame resistance

EN 1021-1/2

BS 5852, ignition source 2-5 DIN 4102 B2

Önorm B1/Q1

UNI 9175/UNI 9176, 1IM

US Cal. Tech. Bull. 117

IMO A.652(16)

Care

Dry clean or clean with foam detergents.

Samples are purely indicative because of natural inconsistencies that occur in the raw materials. As a result there may be small differences in the product delivered.



0575/13



Flame Resistant



WOOL OF NEW ZEALAND



CAT D - Divina Melange 3 KVADRAT



547



527



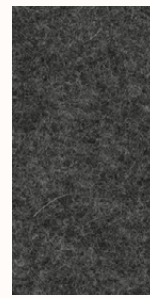
517



571



180



170



147



120



917



937



977



967



821



871

CAT D - Steelcut 3 KVADRAT

Design

Frans Dijkmeijer
Giulio Ridolfo

Width: 140 cm

Weight: app. 825 g/lin.m

Flame resistance

AS/NZS 1530.3
AS/NZS 3837 class 2
ASTM E84 Class A Unadhered
ASTM E84 Class B Adhered
BS 5852 crib 5 with treatment *
BS 5852 part 1
EN 1021-1/2
IMO FTP Code 2010 Part 8
NF D 60 013
NFPA 260
ÖNORM B2/Q1
SN 198 898 5.3 with treatment *
UNI 9175 1IM
US Cal. Bull. 117-2013

Application

Offices, hotels,
institutions, domestic use.
Great durability

Tests

Abrasion
App. 100.000 Martindale rubs,
EN ISO 12947

Pilling
Note 3-4, EN ISO 12945

Light fastness
Note 5-6, ISO 105-B02

Description

Composition:
90% new wool, 10% nylon
Yarn type: Stapel, worsted
Binding: Semi-plain

Care

Vacuuming and dry cleaning.

Samples are purely indicative because of natural inconsistencies that occur in the raw materials. As a result there may be small differences in the product delivered.



CAT D - Steelcut 3 KVADRAT



652



655



662



672



682



695



732



742



775



780



912



922



932



962



975



985

CAT D - Steelcut Trio 3 KVADRAT

Design

Frans Dijkmeijer
Giulio Ridolfo

Width: 140 cm
Weight: app. 770 g/lin.m

Flame resistance
EN 1021-1/2
BS 5852, ignition source 2
DIN 4102 B2
Onorm B1/Q1
Italian Class 1IM
US Cal. Tech. Bull. 117
IMO A.652(16)

Application

Offices, hotels,
institutions, domestic use.
Great durability

Tests

Abrasion
App. 100.000 Martindale rubs,
EN ISO 12947

Pilling
Note 3-4, EN ISO 12945

Light fastness
Note 5-7, ISO 105-B02

Care

Vacuuming and dry cleaning.

Description

Composition:
90% new wool, 10% nylon
Yarn type: Stapel, worsted
Binding: Semi-plain

Samples are purely indicative because of natural inconsistencies that occur in the raw materials. As a result there may be small differences in the product delivered.



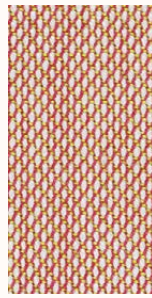
CAT D - Steelcut Trio 3 KVADRAT



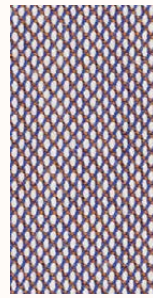
533



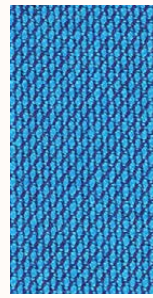
526



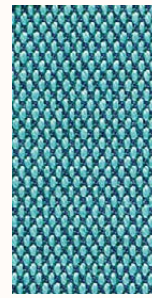
515



806



865



983



776



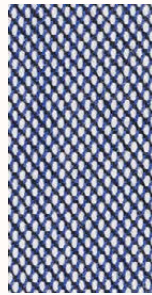
756



883



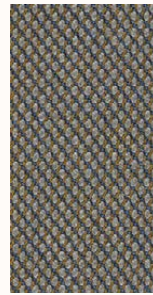
796



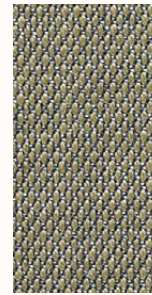
716



746



266



253



205



246



283



376



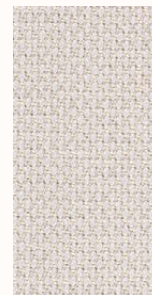
383



276



336



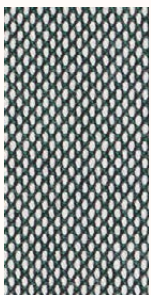
226



213



996



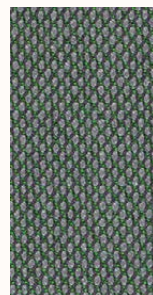
916



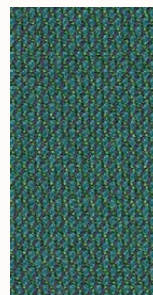
906



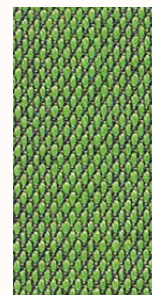
946



966



976



953

CAT E - Uniform Melange KVADRAT

Design

Feabrik

Application

Contract and domestic use.

Description

Composition:
68% new wool, 22% viscose
10% polyester 2mm foam
Width: 165 cm
Weight: app. 870 g/lin.m

Tests

Abrasion
App. 100.000 Martindale rubs,
EN ISO 12947

Pilling
Note 4, EN ISO 12945

Light fastness
6, ISO 105-B02

Flame resistance
EN 1021-1/2
BS 5852,part 1
DIN 4102 B2
Onorm B1/Q1
UNI 9175/UNI 9176, 1IM
US Cal. Tech. Bull. 117.2013
IMO FTP code 2010:part 8

Care

Dry clean or clean with foam
detergents.

Samples are purely indicative because of natural inconsistencies that occur in the raw materials. As a result there may be small differences in the product delivered.



CAT E - Uniform Melange KVADRAT



813



963



833



883



983



993



453



933



913



123



133



163



183



193

Pelle Seta – Soft Leather

Application

Offices, hotels, institutions, domestic use.

Tests

Dry rub fastness
UNI EN ISO 11640 > 3 Grey Scale

Light fastness
UNI EN ISO 105-B02 > 4 Blue Scale
Colour fastness to -and-fro rubbing
Tear Resistance
UNI EN ISO 3377-1 > 20 N

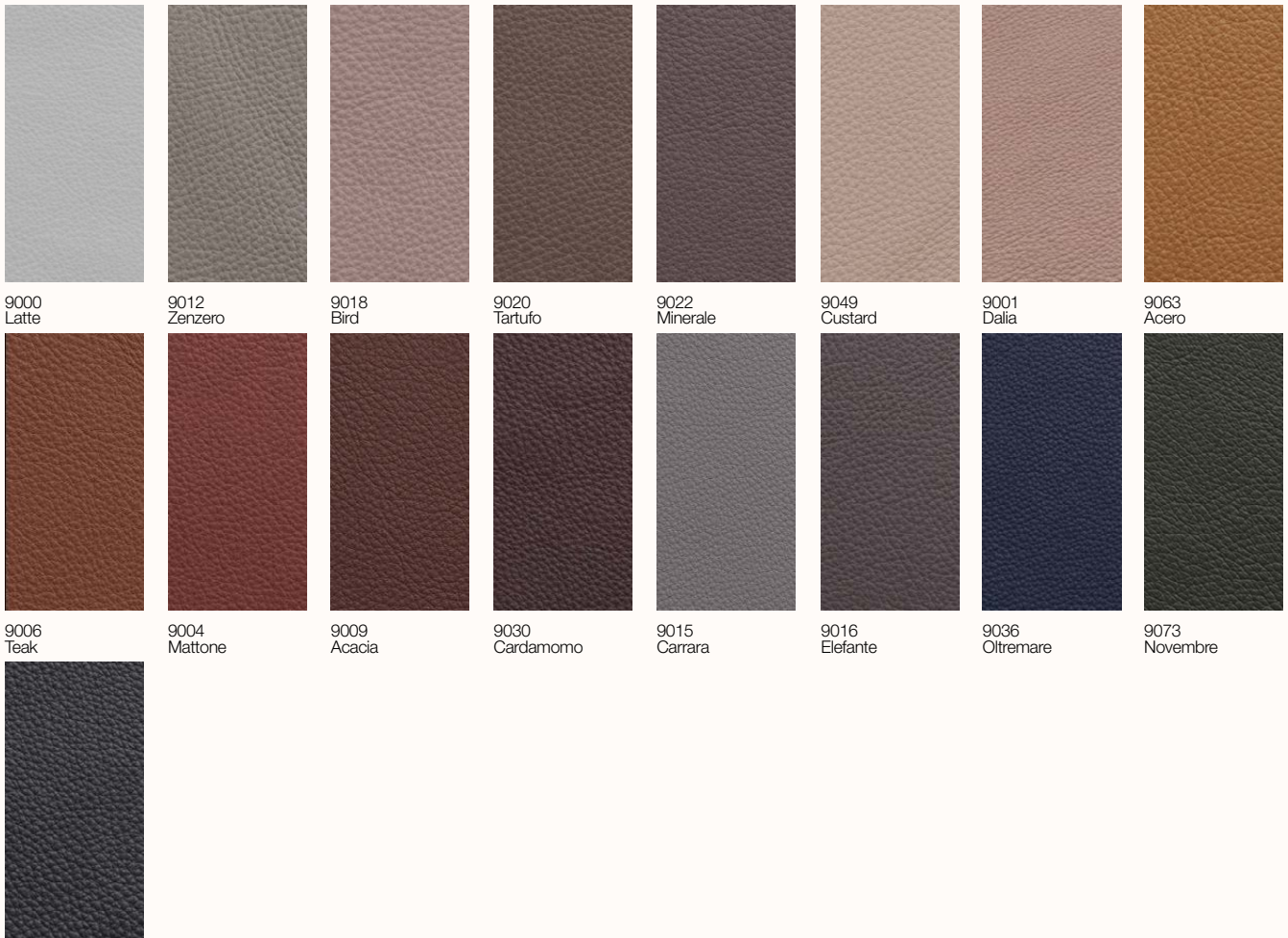
Flame resistance
UNI EN 1021-1 No ignition
UNI EN 1021-2 No ignition

Flexing endurance
> 20000 cycles
UNI EN ISO 17233
Cold crack 1esi stance of finish -15°C
No crack

Care

For a normal cleaning we suggest to dust with a soft and dry cloth. Any stain can be removed using a damp cloth and delicate cleaning products such as a neutral soap or detergent. Do not wipe the surface but just buffer from the edges to the stain centre. It is absolutely forbidden to use abrasive or aggressive products such as solvents , stain removers etc. Do not use steam. For the most resistant stains contact the supplier.

Samples are purely indicative because of natural inconsistencies that occur in the raw materials. As a result there may be small differences in the product delivered.



9023

Cuoio Leather

Application

Contract and domestic use.

Description

Thickness 2.4 - 2.5 mm

Cow hides

Vegetable tannage

Finishing Pigmented

Tests

Dry rub fastness
UNI EN ISO 11640
1000 cycles 5 Grey Scale

Wet rub fastness
UNI EN ISO 11640
250 cycles 5 Grey Scale

Light fastness
UNI EN ISO 105-B01
72h 4-5 Grey Scale

Adhesion of finishing
UNI EN ISO 11644 >15 N/10mm

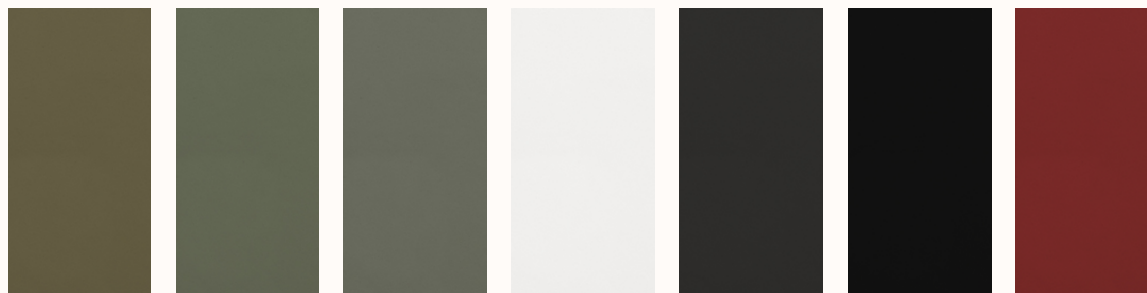
Flex resistance
UNI EN ISO 5402
20000 cycles no damages

Taber abrasion
500 cycles CS10
load 500 gr. 4-5 grey scale

Care

Dust with a soft and dry cloth for the normal cleaning. Stains can be treated with a wet cloth or cotton wool and with products for the cleaning initially more delicate like neutral soap or cleansing milk. Dry immediately after treatment. Never use abrasive or aggressive products like solvents, stain removers. Never steam it. Don't use shoe cleaning products. When a new product is used for cleaning, apply it in a "hidden" area to test its effectiveness and to avoid damages where more visible. Avoid placing leather near direct sun. Keep the leather away from heat sources. Dust regularly with a soft and dry cloth.

Samples are purely indicative because of natural inconsistencies that occur in the raw materials. As a result there may be small differences in the product delivered.



C3
Fango chiaro

C10
Grigio

C7
Fango scuro

C4
Bianco

C9
Marrone scuro

C1
Nero

C2
Rosso